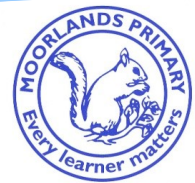




Moorlands Primary School



School Attendance Matters



Spring 1 2022



But we're only a little bit late.....

We have seen a sharp increase in the number of children arriving to school late in recent weeks. In fact over the Autumn term we had **434** late arrivals to school, **that is an average of over 6 children every day!**

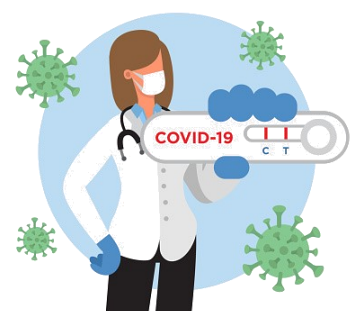
The impact that arriving late to school for the child, their peers and the staff is significant. This affects:

- Lunch arrangements, which impacts on the kitchen staff
- Delivering children to class, which impacts on the office staff
- Catching up on lost learning and missed inputs which impacts on the class and teaching staff, where staff are required to 'catch up' that child
- The child! It is daunting and embarrassing coming into an established class after everyone else
- Friendship difficulties and social challenges; where relationships are not established securely

We understand that sometimes things can be out of our control and that can lead to the odd late arrival. However, there are a number of children who are late on a regular basis. There is a flexible 'window' for school arrivals currently between **8.50 and 9am**. Any arrivals to school after this will be marked as late. Persistent lateness will result in a referral to the Educational Welfare Service, a fixed penalty notice warning or fine or may even lead to prosecution.

Covid and Attendance

Unless a child is symptomatic and awaiting a PCR test result or have themselves tested positive on an Lateral Flow Test (LFT) or PCR test, they are required to come to school. We are not able to authorise absence where other family members are self-isolating or have tested positive for Covid-19.



Please be aware that any requests for **holidays will be unauthorised** and may result in a **Fixed Penalty Notice**.

Holidays do not constitute exceptional circumstances.



We cannot authorise holidays that have been rearranged due to Coronavirus.

Attendance Facts!

Here are some current attendance facts for this year so far. This does not include absence related to Coronavirus.

Average attendance so far this year.....	
Bluebirds	92%
Robins	90%
Frogs	94%
Newts	95%
Butterflies	95%
Ladybirds	94%
Bumblebees	91%
Dragonflies	96%
Owls	95%
Woodpeckers	96%
Foxes	97%
Hedgehogs	95%
Badgers	95%
Deer	96%

Current school attendance = 94%

Our target is =



WELL DONE TO FOXES WHO HAVE THE HIGHEST ATTENDANCE IN THE SCHOOL AND HAVE REACHED OUR SCHOOL TARGET



Class most on time

Foxes with only **3** lates this year!



Class late most often

Frogs with **58** lates this year!