

Academic Year 2024-25

Supporting pupils at school with medical conditions Policy



This policy should be read in conjunction with:

- SEND / Inclusion Policy
- Child Protection and Safeguarding Policy
- Supporting Pupils at School with Medical Conditions (DFE) March 2015 (Appendix C)
- The school's Health and Safety Policy
- Guidance on the Use of Emergency Salbutamol Inhalers in Schools (DoH) March 2015
- Guidance on the Use of Emergency adrenaline auto-injectors in schools (DoH) Sep 2017

This policy sets out Moorlands Primary School Supporting Pupils with Medical Conditions Policy and procedures.

Signed by Head Teacher _____

Signed by Chair of Governors _____

Review Date _____



Moorlands Primary School
Supporting Pupils with Medical Conditions Policy

1) Key roles and responsibilities

a) The Local Authority (LA) is responsible for:

- 1) Promoting co-operation between relevant partners regarding supporting pupils with medical conditions.
- 2) Providing support, advice /guidance and training to schools and their staff to ensure Individual Healthcare Plans (IHP) are effectively delivered.
- 3) Working with schools to ensure pupils attend full-time or make alternative arrangements for the education of pupils who need to be out of school for fifteen days or more due to a health need and who otherwise would not receive a suitable education.
- 4) Arrangement of transport for those who may be in need of it and identified as having a medical condition.

b) The Governing Body is responsible for:

- 1) Ensuring arrangements are in place to support pupils with medical conditions.
- 2) Ensuring the policy is developed collaboratively across services clearly identifies roles and responsibilities and is implemented effectively.
- 3) Ensuring that the Supporting Pupils with Medical Conditions Policy does not discriminate on any grounds including, but not limited to protected characteristics: ethnicity/national/ origin, religion or belief, sex, disability or sexual orientation.
- 4) Ensuring the policy covers arrangements for pupils who are competent to manage their own health needs.
- 5) Ensuring that all pupils with medical conditions are able to play a full and active role in all aspects of school life, participate in school visits / trips/ sporting activities, remain healthy and achieve their academic potential.
- 6) Ensuring that relevant training is delivered to a sufficient number of staff who will have responsibility to support children with medical conditions and that they are signed off as competent to do so. Staff to have access to information, resources and materials.
- 7) Ensuring written records are kept of, any and all, medicines administered to pupils.
- 8) Ensuring the policy sets out procedures in place for emergency situations.
- 9) Ensuring the level of insurance in place reflects the level of risk.
- 10) Handling complaints regarding this policy as outlined in the school's Complaints Policy.



c) The Head Teacher is responsible for:

- 1) Ensuring the policy is developed effectively with partner agencies and then making staff aware of this policy.
- 2) The day-to-day implementation and management of the Supporting Pupils with Medical Conditions Policy and Procedures of Moorlands Primary School.
- 3) Liaising with healthcare professionals regarding the training required for staff.
- 4) Identifying staff that needs to be aware of a child's medical condition.
- 5) Developing Individual Healthcare Plans (IHPs) along with the designated Inclusion leader.
- 6) Ensuring a sufficient number of trained members of staff are available to implement the policy and deliver IHPs in normal, contingency and emergency situations.
- 7) If necessary, facilitating the recruitment of staff for the purpose of delivering the promises made in this policy. Ensuring more than one staff member is identified, to cover absences and emergencies.
- 8) Ensuring the correct level of insurance is in place for teachers who support pupils in line with this policy.
- 9) Continuous two-way liaison with school nurses and school in the case of any child who has or develops an identified medical condition.
- 10) Ensuring confidentiality and data protection
- 11) Assigning appropriate accommodation for medical treatment/ care
- 12) The monitoring of home-school transport arrangements arranged by the LA for those who are identified as having a medical condition.
- 13) Considering the purchase of a defibrillator
- 14) Voluntarily holding 'spare' salbutamol asthma inhalers for emergency use
- 15) Ensuring adequate delegation of responsibilities, in the absence of the designated Assistant Head for Inclusion
- 16) Ensure the Health and Safety and Safeguarding Audits are fit for purpose and full statutory and agreed non-statutory responsibilities are allocated and implemented effectively, by designated staff.

d) Staff members are responsible for:

- 1) Taking appropriate steps to support children with medical conditions and familiarising themselves with procedures which detail how to respond when they become aware that a pupil with a medical condition needs help. *A first-aid certificate is not suff*



- 2) Knowing where controlled drugs are stored and where the key is held.
- 3) Taking account of the needs of pupils with medical conditions in lessons.
- 4) Undertaking training to achieve the necessary competency for supporting pupils with medical conditions, with particular specialist training if they have agreed to undertake a medication responsibility.
- 5) Allowing inhalers, adrenaline pens and blood glucose testers to be held in an accessible location, following DfE and DoH guidance.

e) School nurses are responsible for:

- 1) Collaborating on developing an IHP in anticipation of a child with a medical condition starting school.
- 2) Notifying the school when a child has been identified as requiring support in school due to a medical condition at any time in their school career.
- 3) Supporting staff to implement an IHP and then participate in regular reviews of the IHP. Giving advice and liaison on training needs.
- 4) Liaising locally with lead clinicians on appropriate support.
- 5) Assisting the Head Teacher / Assistant Headteacher for Inclusion in identifying training needs and providers of training.

f) Parents and carers are responsible for:

- 1) Keeping the school informed about any new medical condition or changes to their child/children's health.
- 2) Participating in the development and regular reviews of their child's IHP.
- 3) Completing a parental consent form to administer medicine or treatment before bringing medication into school.
- 4) Providing the school with the medication their child requires and keeping it up to date including collecting leftover medicine.
- 5) Carrying out actions assigned to them in the IHP with particular emphasis on, they or a nominated adult, being contactable at all times.

g) Pupils are responsible for:

- 1) Providing information on how their medical condition affects them.
- 2) Contributing to their IHP, where appropriate



- 3) Complying with the IHP and self-managing their medication or health needs including carrying medicines or devices, if judged competent to do so by a healthcare professional and agreed by parents.


2) Training of staff

- a) Newly appointed teachers, supply or agency staff and support staff will receive training on the 'Supporting Pupils with Medical Conditions' Policy as part of their induction. This will be carried out by **Sarah Roughton (Assistant Head teacher for Inclusion)**
- b) The clinical lead for each training area/session will be named on each IHP, as appropriate.
- c) No staff member may administer prescription medicines or undertake any healthcare procedures without undergoing training specific to the condition and signed off as competent.
- d) School will keep a record of medical conditions supported, training undertaken and a list of teachers qualified to undertake responsibilities under this policy.

3) Medical conditions register /list

- a) Schools admissions forms should request information on pre-existing medical conditions. Parents must have easy pathway to inform school at any point in the school year if a condition develops or is diagnosed. Consideration could be given to seeking consent from GPs to have input into the IHP and also to share information for recording attendance appropriately.
- b) A medical conditions list or register should be kept, updated and reviewed regularly by a nominated member of staff. Each class teacher should have an overview of the list for the pupils in their care, within easy access.
- c) Supply staff and support staff should similarly have access on a need to know basis. Parents should be assured data sharing principles are adhered to.
- d) For pupils on the medical conditions list transition points meetings should take place in advance of transferring to enable parents, school and health professionals to prepare / update the IHP and train staff as appropriate.

4) Individual Healthcare Plans (IHPs)

- a) Where necessary an Individual Healthcare Plan (IHP) will be developed in collaboration with the pupil, parents/carers, Head teacher, Assistant Headteacher and medical professionals. The Head teacher will make the final decision if this is necessary, based on the evidence provided.
- b) IHPs will be easily accessible to all relevant staff, including supply/agency staff, whilst preserving confidentiality. Staffrooms are inappropriate locations under Information Commissioner's Office (ICO) advice for displaying IHP as visitors /parent helpers etc. may enter. If consent is sought from parent, their photo and instructions may be displayed. More discreet location for storage such as Intranet or locked file is more appropriate. ***P.S. However, in the case of conditions with***
 ***tial life-threatening implications the information should be available clearly and***
ible to everyone.

- c) IHPs will be reviewed at least annually or when a child's medical circumstances change, whichever is sooner.
- d) Where a pupil has an Education, Health and Care plan, the IHP will be linked to it or become part of it, where appropriate.
- e) Where a child is returning from a period of hospital education or alternative provision or home tuition, collaboration between the LA provider and school is needed to ensure that the IHP identifies the support the child needs to reintegrate.
- f) Short-term and frequent absences, including those for appointments connected with a pupil's medical condition (which can often be lengthy), also need to be effectively managed and appropriate support put in place to limit the impact on the child's educational attainment and emotional and general wellbeing.

5) Transport arrangements

- a) Where a pupil with an IHP is allocated school transport the school should invite a member of SCC Transport team who will arrange for the driver or escort to participate in the IHP meeting. A copy of the IHP will be copied to the Transport team and kept on the pupil record. The IHP must be passed to the current operator for use by the driver /escort and the Transport team will ensure that the information is supplied when a change of operator takes place.
- b) For some medical conditions the driver/ escort will require adequate training.
For pupils who receive specialised support in school with their medical condition this must equally be planned for in travel arrangements to school and included in the specification to tender for that pupil's transport.
- c) When prescribed controlled drugs need to be sent in to school, parents will be responsible for handing them over to the adult in the car in a suitable bag or container. They must be clearly labelled with name and dose etc.
- d) Controlled drugs will be kept under the supervision of the adult in the car throughout the journey and handed to a school staff member on arrival. Any change in this arrangement will be reported to the Transport team for approval or appropriate action.

6) Education Health Needs (EHN) referrals

- a) All pupils of compulsory school age who because of illness, lasting 15 days or more, would not otherwise receive a suitable full-time education are provided for under the local authority's duty to arrange educational provision for such pupils.
- b) In order to provide the most appropriate provision for the condition the EHN team accepts referrals where there is a medical diagnosis from a medical consultant.

7) Medicines

- a) Where possible, unless advised it would be detrimental to health, medicines should be prescribed in frequencies that allow the pupil to take them outside of school hours.
- b) If this is not possible, prior to staff members administering any medication, the parents/carers of the child must complete and sign a parental consent to administration of medicine form.
- c) No child will be given any prescription or non-prescription medicines without written parental consent, except in exceptional circumstances.
- d) Where a pupil is prescribed medication by a healthcare professional without their parents'/carers' knowledge, every effort will be made to encourage the pupil to involve their parents while respecting their right to confidentiality.
- e) No child under 16 years of age will be given medication containing aspirin without a doctor's prescription.
- f) Medicines MUST be in date, labelled, and provided in the original container (except in the case of insulin / epi-pens which may come in a pen or pump) with dosage instructions. Medicines which do not meet these criteria will not be administered.
- g) A maximum of **four** weeks' supply of the medication may be provided to the school at one time.
- h) A child who has been prescribed a controlled drug may legally have it in their possession if they are competent to do so, but passing it to another child for use is an offence. Monitoring arrangements may be necessary. Schools should otherwise keep controlled drugs that have been prescribed for a pupil securely stored in a non-portable container and only named staff should have access. Controlled drugs should be easily accessible in an emergency.
- i) Emergency medications that need to be in the classroom, such as epi-pens must be kept in a portable locked container during the school day, with an additional one in the school office. Inhalers should be readily available within the classroom.
- j) Most medications will be stored in the School Office.
- k) Any medications left over at the end of the course will be returned to the child's parents.
- l) Written records will be kept of any medication administered to children.
- m) Pupils will never be prevented from accessing their medication.
- n) Emergency salbutamol inhaler kits and epi-pens may be kept voluntarily by school
- o) General posters about medical conditions (diabetes, asthma, epilepsy etc.) are recommended to be visible in the staff room
- p) Moorlands Primary School cannot be held responsible for side effects that occur when medication is taken correctly.
- q) Staff will not force a pupil, if the pupil refuses to comply with their health procedure, and the resulting actions will be clearly written into the IHP which will include informing parents.

8) Emergencies

- a) Medical emergencies will be dealt with under the school's emergency procedures which will be communicated to all relevant staff so they are aware of signs and symptoms.
- b) Pupils will be informed in general terms of what to do in an emergency such as telling a teacher.
- c) If a pupil needs to be taken to hospital, a member of staff will remain with the child until their parents arrive.

9) Day trips, residential visits and sporting activities

- a) Arrangements should be made and be flexible enough to ensure pupils with medical conditions can participate in school trips, residential stays, sports activities and not prevent them from doing so unless a clinician states it is not possible.
- b) To comply with best practice risk assessments should be undertaken, in line with H&S guidance on school trips, in order to plan for including pupils with medical conditions. Consultation with parents, healthcare professionals etc. for trips and visits will be separate to the normal day to day IHP requirements for the school day.

10) Avoiding unacceptable practice

The following practice is unacceptable at Moorlands Primary School:

- a) Preventing children from easily accessing their inhalers and medication.
- c) Assuming that pupils with the same condition require the same treatment.
- d) Ignoring the views of the pupil and/or their parents or ignoring medical evidence or opinion.
- e) Sending pupils home frequently or preventing them from taking part in activities at school
- f) Sending the pupil to the medical room or school office alone or with an unsuitable escort if they become ill.
- g) Penalising pupils with medical conditions for their attendance record where the absences relate to their condition.
- h) Making parents feel obliged or forcing parents to attend school to administer medication or provide medical support, including toilet issues; except under exceptional circumstances.
- i) Creating barriers to children participating in school life, including school trips.

- j) Refusing to allow pupils to eat, drink or use the toilet when they need to in order to manage their condition.

11) Insurance

- a) Teachers who undertake responsibilities within this policy will be assured by the Head Teacher that are covered by the LA/school's insurance.
- b) Full written insurance policy documents are available to be viewed by members of staff who are providing support to pupils with medical conditions. Those who wish to see the documents should contact the Head Teacher.

12) Complaints

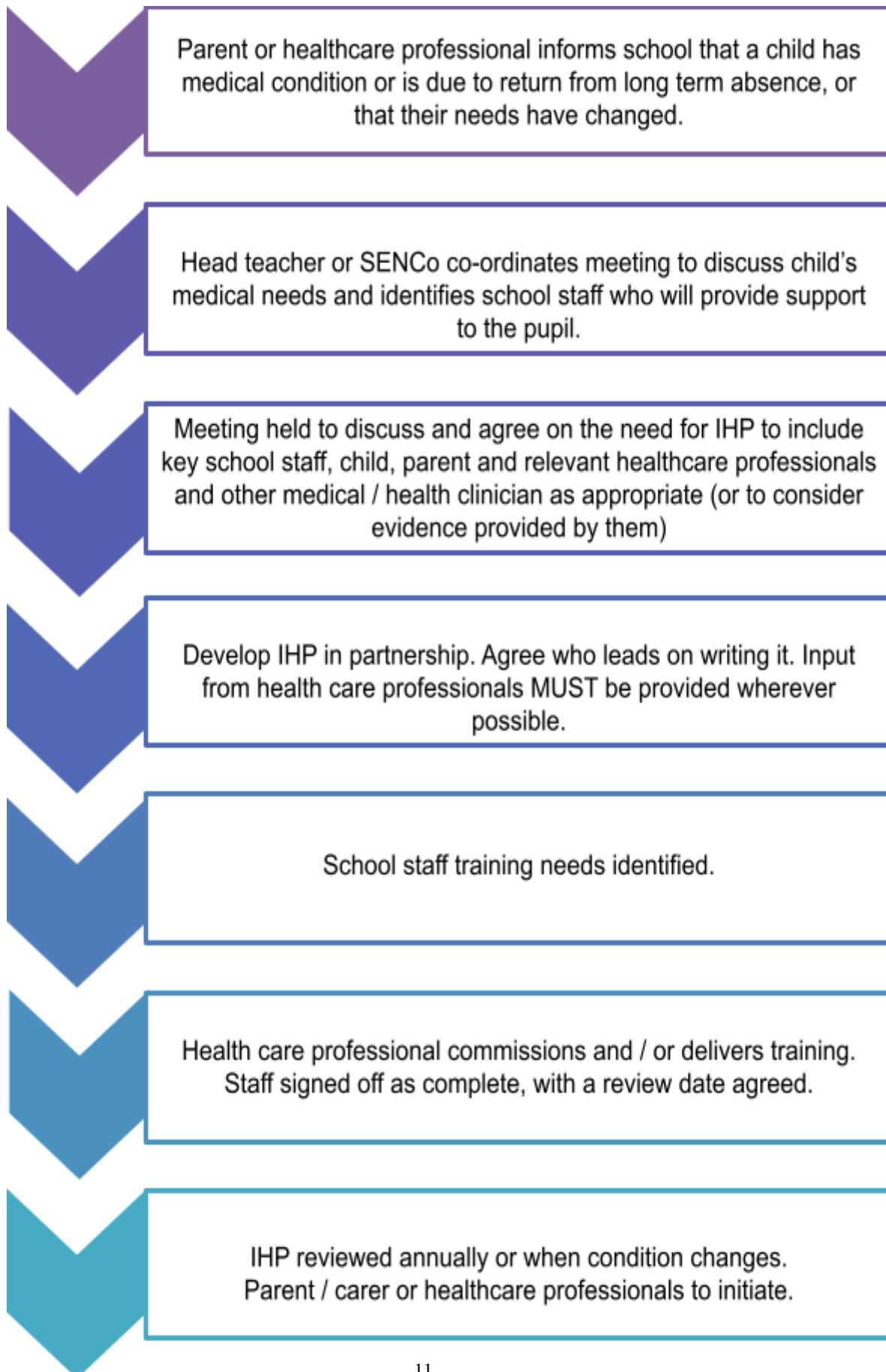
- a) All complaints should be raised with the school in the first instance.
- b) The details of how to make a formal complaint can be found in the School Complaints Policy.

13) Definitions

- a) 'Parent(s)' is a wide reference not only to a pupil's birth parents but to adoptive, step and foster parents, or other persons who have parental responsibility for, or who have care of, a pupil.
 - b) 'Medical condition' for these purposes is either a physical or mental health medical condition as diagnosed by a healthcare professional which results in the child or young person requiring special adjustments for the school day, either ongoing or intermittently. This includes; a chronic or short-term condition, a long-term health need or disability, an illness, injury or recovery from treatment or surgery. *Being 'unwell' and common childhood diseases are not covered.*
 - c) 'Medication' is defined as any prescribed or over the counter treatment.
 - d) 'Prescription medication' is defined as any drug or device prescribed by a doctor, prescribing nurse or dentist and dispensed by a pharmacist with instructions for administration, dose and storage.
 - e) A 'staff member' is defined as any member of staff employed at Moorlands Primary School.
- Moorlands Primary School wishes to ensure that pupils with medical conditions receive appropriate care and support at school. All pupils have an entitlement to a full time curriculum or as much as their medical condition allows. This policy has been developed in line with the Department for Education's statutory guidance released in March 2015 – "Supporting pupils at school with medical conditions" under a statutory duty form section 100 of the Children and Families Act 2014. The statutory duty came into force on 1st September 2014
 - The school will have regard to the statutory guidance issued. We take account of it; carefully consider it and we make all efforts to comply.

- Ofsted places a clear emphasis on meeting the needs of pupils with SEN and Disabilities, which also includes those pupils with medical conditions.

Supporting Pupils with Medical Conditions Flowchart



Appendix B- School Templates

Form 1: Parental Agreement for Administering Medicine

Form 2: Record Log for Administering Medicine (pupil)

Form 3: Individual Health Care Plan (pupil)

Form 4: Temperature Monitoring form (pupil)

Form 1: Parental Agreement for Moorlands Primary School to Administer Medicine



Moorlands Primary School will not give your child medicine unless you complete and sign this form.

The school has a policy that the staff can administer certain types of medicine. To see the policy, please ask a member of the office staff.

My child requires:

Short Term Medication <input type="checkbox"/>	Long Term Medication <input type="checkbox"/>
--	---

Name of child	
Date of birth	
Year group / Class	
Medical condition or illness	

Medicine

Name/type of medicine <i>(as described on the container)</i>			
Expiry date			
Dosage and method <i>(including timing)</i>			
Special precautions/other instructions			
Are there any side effects that the school/setting needs to know about?			
Self-administration	<table border="1" style="width: 100%; border-collapse: collapse;"> <tr> <td style="width: 50%; padding: 5px;">Yes <input type="checkbox"/></td> <td style="width: 50%; padding: 5px;">No <input type="checkbox"/></td> </tr> </table>	Yes <input type="checkbox"/>	No <input type="checkbox"/>
Yes <input type="checkbox"/>	No <input type="checkbox"/>		

999 and the parents will be called in all cases of an emergency.

NB: Medicines must be in the original container as dispensed by the pharmacy.

Contact Details

Name

Daytime telephone no.

Relationship to child

Address

The above information is, to the best of my knowledge, accurate at the time of writing and I give consent to school/setting staff administering medicine in accordance with the school/setting policy. I will inform the school/setting immediately, in writing, if there is any change in dosage or frequency of the medication or if the medicine is stopped.

Parent / Carer Signature(s)	Date
Staff signature	Date

All medicines will be sent home at the end of each half term and must be signed in and out on each occasion.



Form 2: Record of Medicine Administered

Name of Child

--

Date	Medication signed in	Date	Medication signed out

Child's home address	
Medical diagnosis or condition	
Date of plan	
Review date	

Family Contact Information	
Name	
Relationship to child	
Phone numbers	
Home-	Mobile- Work-

Name	
Relationship to child	
Phone numbers	
Home-	Mobile- Work-

Clinic / Hospital Contact

Name	
Contact details	

GP

Name and Surgery	
Contact details	

Other Professional Involvement

Name	
Role	
Contact details	

Who is responsible for providing support in school?	
---	--

Describe medical needs and give details of child's symptoms, triggers, signs, treatments, facilities, equipment or devices, environmental issues etc

Name of medication, dose, method of administration, when to be taken, side effects, contra-indications, administered by/self-administered with/without supervision

Daily care requirements

Specific support for the pupil's educational, social and emotional needs

Arrangements for school visits/trips etc

Describe what constitutes an emergency, and the action to take if this occurs

Who is responsible in an emergency (*state if different for off-site activities*)

Any other relevant information

Plan developed with

Staff training (if identified)

Forms copied to:

AHT for Inclusion, class teacher, office, home



Department
for Education

Supporting pupils at school with medical conditions

**Statutory guidance for governing bodies
of maintained schools and proprietors
of academies in England**

December 2015

Contents

Summary	3
About this guidance	3
Expiry or review date	3
What legislation is this guidance issued under?	3
Who is this guidance for?	4
Key points	4
Introduction	5
The role of governing bodies, proprietors and management committees	7
Developing the school's policy	8
Other issues for consideration	25
Further sources of information	26
Other safeguarding legislation	26
Other relevant legislation	27
Associated resources	27
Annex A: Model process for developing individual healthcare plans	28

Summary

About this guidance

This document contains both statutory guidance and non-statutory advice. The non-statutory advice is presented in text boxes.

The statutory guidance applies to any 'appropriate authority' as defined in section 100 of the Children and Families Act 2014. That means governing bodies in the case of maintained schools, proprietors in the in the committees

'Appropriate authorities' must have regard to¹ this guidance when carrying out their statutory duty to make arrangements to support pupils at school with medical conditions. The guidance also applies to activities taking place off-site as part of normal educational activities. In this document, references to schools are taken to include academies and PRUs and references to governing bodies include proprietors in academies and management committees of PRUs. Further advice, where provided, is based on good practice but is non-statutory.

Early years settings should continue to apply the [Statutory Framework for the Early Years Foundation Stage](#).²

This document replaces an earlier version of this guidance published in September 2014. Previous guidance on managing medicines in schools and early years settings was published in March 2005.

Expiry or review date

This document will be reviewed in autumn 2017.

What legislation is this guidance issued under?

Section 100 of the Children and Families Act 2014 places a duty on governing bodies of maintained schools, proprietors of academies and management committees of PRUs to make arrangements for supporting pupils at their school with medical conditions.

¹ This means to take account of the guidance and to carefully consider it. Having done so, there would need to be a good reason to justify not complying with it.

² <https://www.gov.uk/government/publications/early-years-foundation-stage-framework--2>

In meeting the duty, the governing body, proprietor or management committee must have regard to guidance issued by the Secretary of State under this section. This guidance came into force on 1 September 2014.

Who is this guidance for?

This statutory guidance applies to:

- governing bodies of maintained schools (excluding maintained nursery schools)
- management committees of PRUs
- proprietors of academies, including alternative provision academies (but not including 16–19 academies)

This guidance is also provided to assist and guide:

- schools, academies (including alternative provision academies) and PRUs
- local authorities
- clinical commissioning groups (CCGs), NHS England
- anyone who has an interest in promoting the wellbeing and academic attainment of children with medical conditions, including alternative provision, e.g. independent schools
- parents/carers³ and pupils
- health service providers

Key points

- Pupils at school with medical conditions should be properly supported so that they have full access to education, including school trips and physical education.
- Governing bodies must ensure that arrangements are in place in schools to support pupils at school with medical conditions.
- Governing bodies should ensure that school leaders consult health and social care professionals, pupils and parents to ensure that the needs of children with medical conditions are properly understood and effectively supported.

³ All further references to a parent or parents also includes a carer or carers

Introduction

1. On 1 September 2014 a new duty came into force for governing bodies to make arrangements to support pupils at school with medical conditions. The statutory guidance in this document is intended to help governing bodies meet their legal responsibilities and sets out the arrangements they will be expected to make, based on good practice. The aim is to ensure that all children with medical conditions, in terms of both physical and mental health, are properly supported in school so that they can play a full and active role in school life, remain healthy and achieve their academic potential.

2. Parents of children with medical conditions are often concerned that their child's health will deteriorate when they attend school. This is because pupils with long-term and complex medical conditions may require ongoing support, medicines or care while at school to help them manage their condition and keep them well. Others may require monitoring and interventions in emergency circumstances. It is also the case that children's health needs may change over time, in ways that cannot always be predicted, sometimes resulting in extended absences. It is therefore important that parents feel confident that schools will provide effective support for their child's medical condition and that pupils feel safe. In making decisions about the support they provide, schools should establish relationships with relevant local health services to help them. It is crucial that schools receive and fully consider advice from healthcare professionals and listen to and value the views of parents and pupils.

3. In addition to the educational impacts, there are social and emotional implications associated with medical conditions. Children may be self-conscious about their condition and some may be bullied or develop emotional disorders such as anxiety or depression around their medical condition. In particular, long-term absences due to health problems affect children's educational attainment, impact on their ability to integrate with their peers and affect their general wellbeing and emotional health. Reintegration back into school should be properly supported so that children with medical conditions fully engage with learning and do not fall behind when they are unable to attend. Short-term and frequent absences, including those for appointments connected with a pupil's medical condition (which can often be lengthy), also need to be effectively managed and appropriate support put in place to limit the impact on the child's educational attainment and emotional and general wellbeing.

Some children with medical conditions may be considered to be disabled under the definition set out in the Equality Act 2010. Where this is the case governing bodies must comply with their duties under that Act. Some may also have special educational needs (SEN) and may have a statement, or Education, Health and Care (EHC) plan which brings together health and social care needs, as well as their special educational provision. For children with SEN, this guidance should be read in conjunction with the

[Special educational needs and disability \(SEND\) code of practice](#)⁴ The Special educational needs and disability code of practice explains the duties of local authorities, health bodies, schools and colleges to provide for those with special educational needs under part 3 of the Children and Families Act 2014. For pupils who have medical conditions that require EHC plans, compliance with the SEND code of practice will ensure compliance with this guidance with respect to those children.

⁴ <https://www.gov.uk/government/publications/send-code-of-practice-0-to-25>

The role of governing bodies, proprietors and management committees

4. In meeting the duty to make arrangements to support pupils with medical conditions, functions can be conferred on a governor, a headteacher, a committee or other member of staff as appropriate. Help and co-operation can also be enlisted from other appropriate persons. We expect that an approach to meeting the duty will be taken in light of the statutory guidance. This will inform the school and others about what needs to be done in terms of implementation. However, the governing body, proprietor or management committee remains legally responsible and accountable for fulfilling its statutory duty.

5. The governing body⁵ must ensure that arrangements are in place to support pupils with medical conditions. In doing so it should ensure that such children can access and enjoy the same opportunities at school as any other child.

Further advice:

Schools, local authorities, health professionals, commissioners and other support services should work together to ensure that children with medical conditions receive a full education. In some cases this will require flexibility and involve, for example, programmes of study that rely on part-time attendance at school in combination with alternative provision arranged by the local authority⁶. Consideration may also be given to how children will be reintegrated back into school after periods of absence.

6. In making their arrangements, governing bodies should take into account that many of the medical conditions that require support at school will affect quality of life and may be life-threatening. Some will be more obvious than others. Governing bodies should therefore ensure that the focus is on the needs of each individual child and how their medical condition impacts on their school life.

7. The governing body should ensure that its arrangements give parents and pupils confidence in the school's ability to provide effective support for medical conditions in school. The arrangements should show an understanding of how medical conditions impact on a child's ability to learn, as well as increase confidence and promote self-care. They should ensure that staff are properly trained to provide the support that pupils need.

⁵ In this document, references to 'governing body' include proprietors in academies and management committees of PRUs

⁶ All children must receive a full-time education, unless this would not be in their best interests because of their health needs

Further advice:

Children and young people with medical conditions are entitled to a full education and have the same rights of admission to school as other children. This means that no child with a medical condition can be denied [admission](#)⁷ or prevented from taking up a place in school because arrangements for their medical condition have not been made. However, in line with their safeguarding duties, governing bodies should ensure that pupils' health is not put at unnecessary risk from, for example, infectious diseases. They therefore do not have to accept a child in school at times where it would be detrimental to the health of that child or others to do so.

8. Governing bodies must ensure that the arrangements they put in place are sufficient to meet their statutory responsibilities and should ensure that policies, plans, procedures and systems are properly and effectively implemented.

Developing the school's policy

9. Governing bodies should ensure that all schools develop a policy for supporting pupils with medical conditions that is reviewed regularly and is readily accessible to parents and school staff.

Further advice:

In developing their policy, schools may wish to seek advice from any relevant healthcare professional.

Policy implementation

10. Governing bodies should ensure that the arrangements they set up include details on how the school's policy will be implemented effectively, including a named person who has overall responsibility for policy implementation.

⁷ <https://www.gov.uk/government/publications/school-admissions-code--2>

Further advice:

In respect of implementation, school policies should include:

- who is responsible for ensuring that sufficient staff are suitably trained;
- a commitment that all relevant staff will be made aware of the child's condition;
- cover arrangements in case of staff absence or staff turnover to ensure someone is always available;
- briefing for supply teachers;
- risk assessments for school visits, holidays, and other school activities outside the normal timetable; and
- monitoring of individual healthcare plans.

Procedure to be followed when notification is received that a pupil has a medical condition

11. Governing bodies should ensure that the school's policy sets out the procedures to be followed whenever a school is notified that a pupil has a medical condition.

Further advice:

Procedures should also be in place to cover any transitional arrangements between schools, the process to be followed upon reintegration or when pupils' needs change, and arrangements for any staff training or support. For children starting at a new school, arrangements should be in place in time for the start of the relevant school term. In other cases, such as a new diagnosis or children moving to a new school mid-term, every effort should be made to ensure that arrangements are put in place within two weeks.

Schools do not have to wait for a formal diagnosis before providing support to pupils. In cases where a pupil's medical condition is unclear, or where there is a difference of opinion, judgements will be needed about what support to provide based on the available evidence. This would normally involve some form of medical evidence and consultation with parents. Where evidence conflicts, some degree of challenge may be necessary to ensure that the right support can be put in place.

Individual healthcare plans

12. Governing bodies should ensure that the school's policy covers the role of individual healthcare plans, and who is responsible for their development, in supporting pupils at school with medical conditions.

13. The governing body should ensure that plans are reviewed at least annually, or earlier if evidence is presented that the child's needs have changed. They should be developed with the child's best interests in mind and ensure that the school assesses and manages risks to the child's education, health and social wellbeing, and minimises disruption.

Further advice:

Individual healthcare plans can help to ensure that schools effectively support pupils with medical conditions. They provide clarity about what needs to be done, when and by whom. They will often be essential, such as in cases where conditions fluctuate or where there is a high risk that emergency intervention will be needed, and are likely to be helpful in the majority of other cases, especially where medical conditions are long-term and complex. However, not all children will require one. The school, healthcare professional and parent should agree, based on evidence, when a healthcare plan would be inappropriate or disproportionate. If consensus cannot be reached, the headteacher is best placed to take a final view. A flow chart for identifying and agreeing the support a child needs and developing an individual healthcare plan is provided at annex A.

The format of individual healthcare plans may vary to enable schools to choose whichever is the most effective for the specific needs of each pupil. They should be easily accessible to all who need to refer to them, while preserving confidentiality. Plans should not be a burden on a school, but should capture the key information and actions that are required to support the child effectively. The level of detail within plans will depend on the complexity of the child's condition and the degree of support needed. This is important because different children with the same health condition may require very different support. Where a child has SEN but does not have a statement or EHC plan, their special educational needs should be mentioned in their individual healthcare plan.

Individual healthcare plans (and their review) may be initiated, in consultation with the parent, by a member of school staff or a healthcare professional involved in providing care to the child. Plans should be drawn up in partnership between the

school, parents, and a relevant healthcare professional, e.g. school nurse, specialist or children's community nurse or paediatrician, who can best advise on the particular needs of the child. Pupils should also be involved whenever appropriate. The aim should be to capture the steps which a school should take to help the child manage their condition and overcome any potential barriers to getting the most from their education and how they might work with other statutory services. Partners should agree who will take the lead in writing the plan, but responsibility for ensuring it is finalised and implemented rests with the school.

Where the child has a special educational need identified in a statement or EHC plan, the individual healthcare plan should be linked to or become part of that statement or EHC plan.

Where a child is returning to school following a period of hospital education or alternative provision (including home tuition), schools should work with the local authority and education provider to ensure that the individual healthcare plan identifies the support the child will need to reintegrate effectively.

14. When deciding what information should be recorded on individual healthcare plans, the governing body should consider the following:

- the medical condition, its triggers, signs, symptoms and treatments;
- the pupil's resulting needs, including medication (dose, side effects and storage) and other treatments, time, facilities, equipment, testing, access to food and drink where this is used to manage their condition, dietary requirements and environmental issues, e.g. crowded corridors, travel time between lessons;
- specific support for the pupil's educational, social and emotional needs – for example, how absences will be managed, requirements for extra time to complete exams, use of rest periods or additional support in catching up with lessons, counselling sessions;
- the level of support needed (some children will be able to take responsibility for their own health needs) including in emergencies. If a child is self-managing their medication, this should be clearly stated with appropriate arrangements for monitoring;
- who will provide this support, their training needs, expectations of their role and confirmation of proficiency to provide support for the child's medical condition from a healthcare professional; and cover arrangements for when they are unavailable;
- who in the school needs to be aware of the child's condition and the support required;

- arrangements for written permission from parents and the headteacher for medication to be administered by a member of staff, or self-administered by the pupil during school hours;
- separate arrangements or procedures required for school trips or other school activities outside of the normal school timetable that will ensure the child can participate, e.g. risk assessments;
- where confidentiality issues are raised by the parent/child, the designated individuals to be entrusted with information about the child's condition; and
- what to do in an emergency, including whom to contact, and contingency arrangements. Some children may have an emergency healthcare plan prepared by their lead clinician that could be used to inform development of their individual healthcare plan.

Roles and responsibilities

15. The governing body should ensure that the school's policy clearly identifies the roles and responsibilities of all those involved in the arrangements they make to support pupils at school with medical conditions.

Further advice:

Supporting a child with a medical condition during school hours is not the sole responsibility of one person. A school's ability to provide effective support will depend to an appreciable extent on working co-operatively with other agencies. Partnership working between school staff, healthcare professionals (and, where appropriate, social care professionals), local authorities, and parents and pupils will be critical. An essential requirement for any policy therefore will be to identify collaborative working arrangements between all those involved, showing how they will work in partnership to ensure that the needs of pupils with medical conditions are met effectively.

Some of the most important roles and responsibilities are listed below, but schools may additionally want to cover a wider range of people in their policy.

16. Governing bodies must make arrangements to support pupils with medical conditions in school, including making sure that a policy for supporting pupils with medical conditions in school is developed and implemented. They should ensure that sufficient staff have received suitable training and are competent before they take on responsibility to support children with medical conditions.

Further advice on the role of governing bodies:

Governing bodies should ensure that pupils with medical conditions are supported to enable the fullest participation possible in all aspects of school life. They should also ensure that any members of school staff who provide support to pupils with medical conditions are able to access information and other teaching support materials as needed.

Advice on the role of headteachers:

Headteachers should ensure that their school's policy is developed and effectively implemented with partners. This includes ensuring that all staff are aware of the policy for supporting pupils with medical conditions and understand their role in its implementation. Headteachers should ensure that all staff who need to know are aware of the child's condition. They should also ensure that sufficient trained numbers of staff are available to implement the policy and deliver against all individual healthcare plans, including in contingency and emergency situations. This may involve recruiting a member of staff for this purpose. Headteachers have overall responsibility for the development of individual healthcare plans. They should also make sure that school staff are appropriately insured and are aware that they are insured to support pupils in this way. They should contact the school nursing service in the case of any child who has a medical condition that may require support at school, but who has not yet been brought to the attention of the school nurse.

Advice on the role of parents:

Parents should provide the school with sufficient and up-to-date information about their child's medical needs. They may in some cases be the first to notify the school that their child has a medical condition. Parents are key partners and should be involved in the development and review of their child's individual healthcare plan, and may be involved in its drafting. They should carry out any action they have agreed to as part of its implementation, e.g. provide medicines and equipment and ensure they or another nominated adult are contactable at all times.

Advice on the role of pupils:

Pupils with medical conditions will often be best placed to provide information about how their condition affects them. They should be fully involved in discussions about their medical support needs and contribute as much as possible to the development of, and comply with, their individual healthcare plan. Other pupils will often be sensitive to the needs of those with medical conditions.

Advice on the role of school staff:

Any member of school staff may be asked to provide support to pupils with medical conditions, including the administering of medicines, although they cannot be required to do so. Although administering medicines is not part of teachers' professional duties, they should take into account the needs of pupils with medical conditions that they teach. School staff should receive sufficient and suitable training and achieve the necessary level of competency before they take on responsibility to support children with medical conditions. Any member of school staff should know what to do and respond accordingly when they become aware that a pupil with a medical condition needs help.

Advice on the role of school nurses:

Every school has access to school nursing services. They are responsible for notifying the school when a child has been identified as having a medical condition which will require support in school. Wherever possible, they should do this before the child starts at the school. They would not usually have an extensive role in ensuring that schools are taking appropriate steps to support children with medical conditions, but may support staff on implementing a child's individual healthcare plan and provide advice and liaison, for example on training. School nurses can liaise with lead clinicians locally on appropriate support for the child and associated staff training needs; for example, there are good models of local specialist nursing teams offering training to local school staff, hosted by a local school. Community nursing teams will also be a valuable potential resource for a school seeking advice and support in relation to children with a medical condition. See also paragraphs 18 to 20 below about training for school staff.

Advice on the role of other healthcare professionals:

Other healthcare professionals, including GPs and paediatricians, should notify the school nurse when a child has been identified as having a medical condition that will require support at school. They may provide advice on developing individual healthcare plans. Specialist local health teams may be able to provide support in schools for children with particular conditions (e.g. asthma, diabetes, epilepsy).

Advice on the role of local authorities:

Local authorities are commissioners of school nurses for maintained schools and academies. Under Section 10 of the Children Act 2004, they have a duty to promote co-operation between relevant partners – such as governing bodies of maintained schools, proprietors of academies, clinical commissioning groups and NHS England – with a view to improving the wellbeing of children with regard to their physical and mental health, and their education, training and recreation. Local authorities and clinical commissioning groups (CCGs) **must** make joint commissioning arrangements for education, health and care provision for children and young people with SEN or disabilities (Section 26 of the Children and Families Act 2014). Local authorities should provide support, advice and guidance, including suitable training for school staff, to ensure that the support specified within individual healthcare plans can be delivered effectively. Local authorities should work with schools to support pupils with medical conditions to attend full-time. Where pupils would not receive a suitable education in a mainstream school because of their health needs, the local authority has a duty to make other arrangements. Statutory guidance for local authorities⁸ sets out that they should be ready to make arrangements under this duty when it is clear that a child will be away from school for 15 days or more because of health needs⁹ (whether consecutive or cumulative across the school year).

⁸ Local authorities must have regard to statutory guidance on the education of children unable to attend school because of health needs.

⁹ <https://www.gov.uk/government/publications/education-for-children-with-health-needs-who-cannot-attend-school>

Advice on the role of clinical commissioning groups (CCGs):

Clinical commissioning groups commission other healthcare professionals such as specialist nurses. They should ensure that commissioning is responsive to children's needs, and that health services are able to co-operate with schools supporting children with medical conditions. They have a reciprocal duty to co-operate under Section 10 of the Children Act 2004 and **must** make joint commissioning arrangements for education, health and care provision for children and young people with SEN or disabilities (as described above for local authorities). Clinical commissioning groups should be responsive to local authorities and schools seeking to strengthen links between health services and schools, and consider how to encourage health services in providing support and advice (and can help with any potential issues or obstacles in relation to this). The local Health and Wellbeing Board will also provide a forum for local authorities and CCGs to consider with other partners, including locally elected representatives, how to strengthen links between education, health and care settings. Since 2013 Local Authorities have been responsible for commissioning public health services for school-aged children including school nursing. CCGs should be aware that this does not include clinical support for children in schools who have long-term conditions and disabilities, which remains a CCG commissioning responsibility. Children in special schools in particular may need care which falls outside the remit of local authority commissioned school nurses, such as gastrostomy and tracheostomy care, or postural support. CCGs should ensure their commissioning arrangements are adequate to provide the ongoing support essential to the safety of these vulnerable children whilst in school.

Advice on providers of health services:

Providers of health services should co-operate with schools that are supporting children with a medical condition, including appropriate communication, liaison with school nurses and other healthcare professionals such as specialist and children's community nurses, as well as participating in locally developed outreach and training. Health services can provide valuable support, information, advice and guidance to schools, and their staff, to support children with medical conditions at school.

Advice on the role of Ofsted:

Ofsted's new common inspection framework came into effect on 1 September 2015, aimed at promoting greater consistency across inspection remits. Inspectors must consider how well a school meets the needs of the full range of pupils, including those with medical conditions. Key judgements will be informed by the progress and achievement of these children alongside those of pupils with special educational needs and disabilities, and also by pupils' spiritual, moral, social and cultural development.

Staff training and support

17. Governing bodies should ensure that the school's policy sets out clearly how staff will be supported in carrying out their role to support pupils with medical conditions, and how this will be reviewed. This should specify how training needs are assessed, and how and by whom training will be commissioned and provided.
18. The school's policy should be clear that any member of school staff providing support to a pupil with medical needs should have received suitable training.

Further advice:

Suitable training should have been identified during the development or review of individual healthcare plans. Some staff may already have some knowledge of the specific support needed by a child with a medical condition and so extensive training may not be required. Staff who provide support to pupils with medical conditions should be included in meetings where this is discussed.

The relevant healthcare professional should normally lead on identifying and agreeing with the school the type and level of training required, and how this can be obtained. Schools may choose to arrange training themselves and should ensure this remains up-to-date.

Training should be sufficient to ensure that staff are competent and have confidence in their ability to support pupils with medical conditions, and to fulfil the requirements as set out in individual healthcare plans. They will need an understanding of the specific medical conditions they are being asked to deal with, their implications and preventative measures.

A first-aid certificate does not constitute appropriate training in supporting children with medical conditions.

Healthcare professionals, including the school nurse, can provide confirmation of the proficiency of staff in a medical procedure, or in providing medication.

The school's policy should additionally set out arrangements for whole-school awareness training so that all staff are aware of the school's policy for supporting pupils with medical conditions and their role in implementing that policy. Induction arrangements for new staff should be included. The relevant healthcare professional should be able to advise on training that will help ensure that all medical conditions affecting pupils in the school are understood fully. This includes preventative and emergency measures so that staff can recognise and act quickly when a problem occurs.

The family of a child will often be key in providing relevant information to school staff about how their child's needs can be met, and parents should be asked for their views. They should provide specific advice, but should not be the sole trainer.

Governing bodies should consider providing details of continuing professional development opportunities.

19. Staff must not give prescription medicines or undertake healthcare procedures without appropriate training (updated to reflect requirements within individual healthcare plans).

Further advice:

In some cases, written instructions from the parent or on the medication container dispensed by the pharmacist may be considered sufficient, but ultimately this is for the school to decide, having taken into consideration the training requirements as specified in pupils' individual health care plans.

The child's role in managing their own medical needs

20. Governing bodies should ensure that the school's policy covers arrangements for children who are competent to manage their own health needs and medicines.

Further advice:

After discussion with parents, children who are competent should be encouraged to take responsibility for managing their own medicines and procedures. This should be reflected within individual healthcare plans.

Wherever possible, children should be allowed to carry their own medicines and relevant devices or should be able to access their medicines for self-medication quickly and easily. Children who can take their medicines themselves or manage procedures may require an appropriate level of supervision. If it is not appropriate for a child to self-manage, relevant staff should help to administer medicines and manage procedures for them.

If a child refuses to take medicine or carry out a necessary procedure, staff should not force them to do so, but follow the procedure agreed in the individual healthcare plan. Parents should be informed so that alternative options can be considered.

Managing medicines on school premises

21. The governing body should ensure that the school's policy is clear about the procedures to be followed for managing medicines.

Further advice:

Although schools may already have such procedures in place, they should reflect the following details:

- medicines should only be administered at school when it would be detrimental to a child's health or school attendance not to do so
- no child under 16 should be given prescription or non-prescription medicines without their parent's written consent – except in exceptional circumstances where the medicine has been prescribed to the child without the knowledge of the parents. In such cases, every effort should be made to encourage the child or young person to involve their parents while respecting their right to confidentiality. Schools should set out the circumstances in which non-prescription medicines may be administered
- a child under 16 should never be given medicine containing aspirin unless prescribed by a doctor. Medication, e.g. for pain relief, should never be administered without first checking maximum dosages and when the previous dose was taken. Parents should be informed
- where clinically possible, medicines should be prescribed in dose frequencies which enable them to be taken outside school hours
- schools should only accept prescribed medicines if these are in-date, labelled, provided in the original container as dispensed by a pharmacist and include instructions for administration, dosage and storage. The exception to this is insulin, which must still be in date, but will generally be available to schools inside an insulin pen or a pump, rather than in its original container
- all medicines should be stored safely. Children should know where their medicines are at all times and be able to access them immediately. Where relevant, they should know who holds the key to the storage facility. Medicines and devices such as asthma inhalers, blood glucose testing meters and adrenaline pens should be always readily available to children and not locked away. This is particularly important to consider when outside of school premises, e.g. on school trips

- when no longer required, medicines should be returned to the parent to arrange for safe disposal. Sharps boxes should always be used for the disposal of needles and other sharps
- a child who has been prescribed a controlled drug may legally have it in their possession if they are competent to do so, but passing it to another child for use is an offence. Monitoring arrangements may be necessary. Schools should otherwise keep controlled drugs that have been prescribed for a pupil securely stored in a non-portable container and only named staff should have access. Controlled drugs should be easily accessible in an emergency. A record should be kept of any doses used and the amount of the controlled drug held
- school staff may administer a controlled drug to the child for whom it has been prescribed. Staff administering medicines should do so in accordance with the prescriber's instructions. Schools should keep a record of all medicines administered to individual children, stating what, how and how much was administered, when and by whom. Any side effects of the medication to be administered at school should be noted in school

Record keeping

22. Governing bodies should ensure that written records are kept of all medicines administered to children.

Further advice:

Records offer protection to staff and children and provide evidence that agreed procedures have been followed. Parents should be informed if their child has been unwell at school.

Emergency procedures

23. Governing bodies should ensure that the school's policy sets out what should happen in an emergency situation.

Further advice:

As part of general risk management processes, all schools should have arrangements in place for dealing with emergencies for all school activities wherever they take place, including on school trips within and outside the UK.

Where a child has an individual healthcare plan, this should clearly define what constitutes an emergency and explain what to do, including ensuring that all relevant staff are aware of emergency symptoms and procedures. Other pupils in the school should know what to do in general terms, such as informing a teacher immediately if they think help is needed.

If a child needs to be taken to hospital, staff should stay with the child until the parent arrives, or accompany a child taken to hospital by ambulance. Schools need to ensure they understand the local emergency services' cover arrangements and that the correct information is provided for navigation systems.

Day trips, residential visits and sporting activities

24. Governing bodies should ensure that their arrangements are clear and unambiguous about the need to support actively pupils with medical conditions to participate in school trips and visits, or in sporting activities, and not prevent them from doing so.

Further advice:

Teachers should be aware of how a child's medical condition will impact on their participation, but there should be enough flexibility for all children to participate according to their own abilities and with any reasonable adjustments. Schools should make arrangements for the inclusion of pupils in such activities with any adjustments as required unless evidence from a clinician such as a GP states that this is not possible.

Schools should consider what reasonable adjustments they might make to enable children with medical needs to participate fully and safely on visits. It is best practice to carry out a risk assessment so that planning arrangements take account of any steps needed to ensure that pupils with medical conditions are included. This will require consultation with parents and pupils and advice from the relevant healthcare professional to ensure that pupils can participate safely. Please also see Health and Safety Executive (HSE) guidance on school trips.

Unacceptable practice

25. Governing bodies should ensure that the school's policy is explicit about what practice is not acceptable.

Further advice:

Although school staff should use their discretion and judge each case on its merits with reference to the child's individual healthcare plan, it is not generally acceptable practice to:

- prevent children from easily accessing their inhalers and medication and administering their medication when and where necessary;
- assume that every child with the same condition requires the same treatment;
- ignore the views of the child or their parents; or ignore medical evidence or opinion (although this may be challenged);
- send children with medical conditions home frequently for reasons associated with their medical condition or prevent them from staying for normal school activities, including lunch, unless this is specified in their individual healthcare plans;
- if the child becomes ill, send them to the school office or medical room unaccompanied or with someone unsuitable;
- penalise children for their attendance record if their absences are related to their medical condition, e.g. hospital appointments;
- prevent pupils from drinking, eating or taking toilet or other breaks whenever they need to in order to manage their medical condition effectively;
- require parents, or otherwise make them feel obliged, to attend school to administer medication or provide medical support to their child, including with toileting issues. No parent should have to give up working because the school is failing to support their child's medical needs; or
- prevent children from participating, or create unnecessary barriers to children participating in any aspect of school life, including school trips, e.g. by requiring parents to accompany the child.

Liability and indemnity

26. Governing bodies of maintained schools and management committees of PRUs should ensure that the appropriate level of insurance is in place and appropriately reflects

the level of risk. Proprietors of academies should ensure that either the appropriate level of insurance is in place or that the academy is a member of the Department for Education's Risk Protection Arrangement (RPA).

Further advice:

It is important that the school policy sets out the details of the school's insurance arrangements which cover staff providing support to pupils with medical conditions. Insurance policies should be accessible to staff providing such support.

Insurance policies should provide liability cover relating to the administration of medication, but individual cover may need to be arranged for any healthcare procedures. The level and ambit of cover required must be ascertained directly from the relevant insurers. Any requirements of the insurance, such as the need for staff to be trained, should be made clear and complied with.

In the event of a claim alleging negligence by a member of staff, civil actions are likely to be brought against the employer.

RPA is a scheme provided specifically for academies.

Complaints

27. Governing bodies should ensure that the school's policy sets out how complaints concerning the support provided to pupils with medical conditions may be made and will be handled.

Further advice:

Should parents or pupils be dissatisfied with the support provided they should discuss their concerns directly with the school. If for whatever reason this does not resolve the issue, they may make a formal complaint via the school's complaints procedure. Making a formal complaint to the Department for Education should only occur if it comes within scope of section 496/497 of the Education Act 1996 and after other attempts at resolution have been exhausted. In the case of academies, it will be relevant to consider whether the academy has breached the terms of its Funding Agreement¹⁰, or failed to comply with any other legal obligation placed on it. Ultimately, parents (and pupils) will be able to take independent legal advice and bring formal proceedings if they consider they have legitimate grounds to do so.

¹⁰ The contractual relationship between the academy and the Department for Education

Other issues for consideration

Advice:

Governing bodies may want the school's policy to refer to:

- home-to-school transport – this is the responsibility of local authorities, who may find it helpful to be aware of a pupil's individual healthcare plan and what it contains, especially in respect of emergency situations. This may be helpful in developing transport healthcare plans¹¹ for pupils with life-threatening conditions;
- defibrillators – sudden cardiac arrest is when the heart stops beating and can happen to people of any age and without warning. If this does happen, quick action (in the form of early CPR and defibrillation) can help save lives. A defibrillator is a machine used to give an electric shock to restart a patient's heart when they are in cardiac arrest. Modern defibrillators are easy to use, inexpensive and safe.
 - Schools are advised to consider purchasing a defibrillator as part of their first-aid equipment. DfE has put [arrangements](#)¹² in place to assist schools in purchasing defibrillators at reduced cost. If schools install a defibrillator, they should notify the local NHS ambulance service of its location.
 - Staff members appointed as first-aiders should already be trained in the use of CPR and may wish to promote these techniques more widely in the school, amongst both teachers and pupils alike; and
- asthma inhalers – schools may hold asthma inhalers for emergency use. This is entirely voluntary, and the Department of Health has published a protocol¹³ which provides further information.

¹¹ These are separate to the individual healthcare plans referred to throughout this document.

¹² <https://www.gov.uk/government/publications/automated-external-defibrillators-aeds-in-schools>

¹³ <https://www.gov.uk/government/publications/emergency-asthma-inhalers-for-use-in-schools>

Further sources of information

Other safeguarding legislation

Section 21 of the Education Act 2002 provides that governing bodies of maintained schools must, in discharging their functions in relation to the conduct of the school, promote the wellbeing of pupils at the school.

Section 175 of the Education Act 2002 provides that governing bodies of maintained schools must make arrangements for ensuring that their functions relating to the conduct of the school are exercised with a view to safeguarding and promoting the welfare of children who are pupils at the school. Part 3, and in particular paragraph 7 of the Schedule to the Education (Independent School Standards) Regulations 2014 sets this out in relation to academy schools and alternative provision academies.

Section 3 of the Children Act 1989 confers a duty on a person with the care of a child (who does not have parental responsibility for the child) to do all that is reasonable in all the circumstances for the purposes of safeguarding or promoting the welfare of the child.

Section 17 of the Children Act 1989 gives local authorities a general duty to safeguard and promote the welfare of children in need in their area.

Section 10 of the Children Act 2004 provides that the local authority must make arrangements to promote co-operation between the authority and relevant partners (including the governing body of a maintained school, the proprietor of an academy, clinical commissioning groups and the NHS Commissioning Board) with a view to improving the wellbeing of children, including their physical and mental health, protection from harm and neglect, and education. Relevant partners are under a duty to co-operate in the making of these arrangements.

The NHS Act 2006: Section 3 gives Clinical Commissioning Groups a duty to arrange for the provision of health services to the extent the CCG considers it necessary to meet the reasonable needs of the persons for whom it is responsible. **Section 3A** provides for a CCG to arrange such services as it considers appropriate to secure improvements in physical and mental health of, and in the prevention, diagnosis and treatment of illness, in, the persons for whom it is responsible. **Section 2A** provides for local authorities to secure improvements to public health, and in doing so, to commission school nurses.

Governing Bodies' duties towards disabled children and adults are included in the **Equality Act 2010**, and the key elements are as follows:

- They **must not** discriminate against, harass or victimise disabled children and young people

- They **must** make reasonable adjustments to ensure that disabled children and young people are not at a substantial disadvantage compared with their peers. This duty is anticipatory: adjustments must be planned and put in place in advance, to prevent that disadvantage

Other relevant legislation

Section 2 of the **Health and Safety at Work Act 1974**, and the associated regulations, provides that it is the duty of the employer (the local authority, governing body or academy trust) to take reasonable steps to ensure that staff and pupils are not exposed to risks to their health and safety.

Under the **Misuse of Drugs Act 1971** and associated Regulations the supply, administration, possession and storage of certain drugs are controlled. Schools may have a child who has been prescribed a controlled drug.

The **Medicines Act 1968** specifies the way that medicines are prescribed, supplied and administered within the UK and places restrictions on dealings with medicinal products, including their administration.

Regulation 5 of the School Premises (England) Regulations 2012 (as amended) provides that maintained schools must have accommodation appropriate and readily available for use for medical examination and treatment and for the caring of sick or injured pupils. It **must** contain a washing facility and be reasonably near to a toilet. It **must not** be teaching accommodation. Paragraph 24 of the Schedule to the the Education (Independent School Standards) Regulations 2014 replicates this provision for independent schools (including academy schools and alternative provision academies).

The [Special Educational Needs and Disability Code of Practice](#)¹⁴

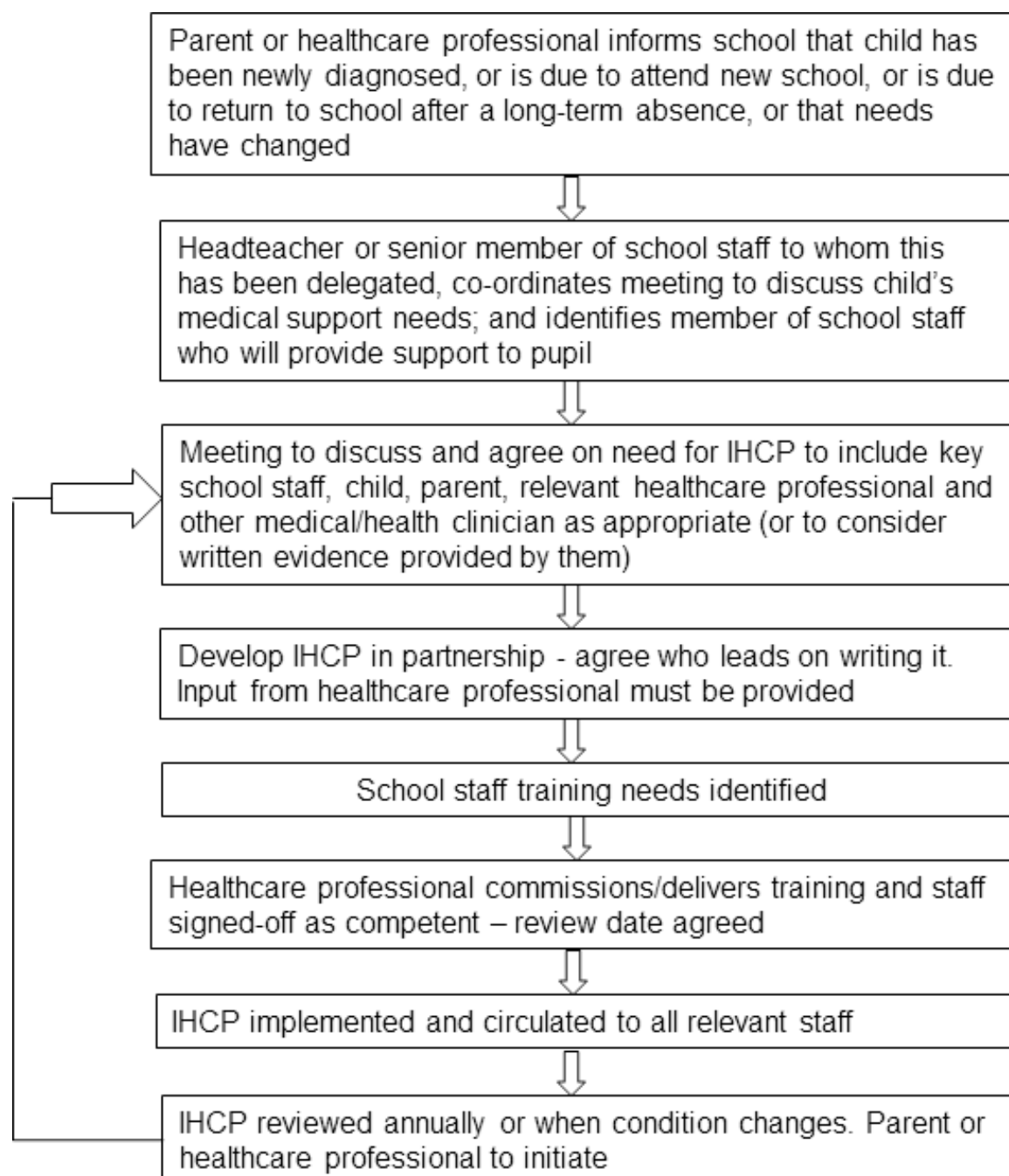
Section 19 of the Education Act 1996 (as amended by Section 3 of the Children, Schools and Families Act 2010) provides a duty on local authorities of maintained schools to arrange suitable education for those who would not receive such education unless such arrangements are made for them. This education must be full-time, or such part-time education as is in a child's best interests because of their health needs.

Associated resources

[View links to other information and associated advice, guidance and resources](#)¹⁵, e.g. templates, and to organisations providing advice and support on specific medical conditions.

¹⁴ <https://www.gov.uk/government/publications/send-code-of-practice-0-to-25>

Annex A: Model process for developing individual healthcare plans





Department
for Education

© Crown copyright 2015

This publication (not including logos) is licensed under the terms of the Open Government Licence v3.0 except where otherwise stated. Where we have identified any third party copyright information you will need to obtain permission from the copyright holders concerned.

To view this licence:

visit www.nationalarchives.gov.uk/doc/open-government-licence/version/3

email psi@nationalarchives.gsi.gov.uk

write to Information Policy Team, The National Archives, Kew, London, TW9 4DU

About this publication:

enquiries www.education.gov.uk/contactus

download www.gov.uk/government/publications

Follow us on Twitter:

[@educationgovuk](https://twitter.com/educationgovuk)

Like us on Facebook:

facebook.com/educationgovuk

Reference: DFE-00393-2014





Department
for Education

Templates

Supporting pupils with medical conditions

May 2014

Contents

Introduction	13
Template A: individual healthcare plan	14
Template B: parental agreement for setting to administer medicine	16
Template C: record of medicine administered to an individual child	17
Template D: record of medicine administered to all children	19
Template E: staff training record – administration of medicines	20
Template F: contacting emergency services	20
Template G: model letter inviting parents to contribute to individual healthcare plan development	22

Template A: individual healthcare plan

Name of school/setting

Child's name

Group/class/form

Date of birth

Child's address

Medical diagnosis or condition

Date

Review date

Family Contact Information

Name

Phone no. (work)

(home)

(mobile)

Name

Relationship to child

Phone no. (work)

(home)

(mobile)

Clinic/Hospital Contact

Name

Phone no.

G.P.

Name

Phone no.

Who is responsible for providing support in school

--

Describe medical needs and give details of child's symptoms, triggers, signs, treatments, facilities, equipment or devices, environmental issues etc

--

Name of medication, dose, method of administration, when to be taken, side effects, contra-indications, administered by/self-administered with/without supervision

Daily care requirements

Specific support for the pupil's educational, social and emotional needs

Arrangements for school visits/trips etc

Other information

Describe what constitutes an emergency, and the action to take if this occurs

Who is responsible in an emergency (*state if different for off-site activities?*)

Plan developed with

Staff training needed/undertaken – who, what, when

Form copied to

Template B: parental agreement for setting to administer medicine

The school/setting will not give your child medicine unless you complete and sign this form, and the school or setting has a policy that the staff can administer medicine.

Date for review to be initiated by
 Name of school/setting
 Name of child
 Date of birth
 Group/class/form
 Medical condition or illness

Medicine

Name/type of medicine
(as described on the container)
 Expiry date
 Dosage and method
 Timing
 Special precautions/other instructions
 Are there any side effects that the school/setting needs to know about?
 Self-administration – y/n
 Procedures to take in an emergency

NB: Medicines must be in the original container as dispensed by the pharmacy

Contact Details

Name
 Daytime telephone no.
 Relationship to child
 Address
 I understand that I must deliver the medicine personally to

[agreed member of staff]

The above information is, to the best of my knowledge, accurate at the time of writing and I give consent to school/setting staff administering medicine in accordance with the school/setting policy. I will inform the school/setting immediately, in writing, if there is any change in dosage or frequency of the medication or if the medicine is stopped.

Signature(s)

Date

Template C: record of medicine administered to an individual child

Name of school/setting
 Name of child
 Date medicine provided by parent
 Group/class/form
 Quantity received
 Name and strength of medicine
 Expiry date
 Quantity returned
 Dose and frequency of medicine

/ /
/ /

Staff signature

Signature of parent

Date
 Time given
 Dose given
 Name of member of staff
 Staff initials

/ / / / /		

Date
 Time given
 Dose given
 Name of member of staff
 Staff initials

/ / / / /		

C: Record of medicine administered to an individual child (Continued)

Date			
Time given			
Dose given			
Name of member of staff			
Staff initials			

Date			
Time given			
Dose given			
Name of member of staff			
Staff initials			

Date			
Time given			
Dose given			
Name of member of staff			
Staff initials			

Date			
Time given			
Dose given			
Name of member of staff			
Staff initials			

Template E: staff training record – administration of medicines

Name of school/setting

Name

Type of training received

Date of training completed

Training provided by

Profession and title

I confirm that [name of member of staff] has received the training detailed above and is competent to carry out any necessary treatment. I recommend that the training is updated [name of member of staff].

Trainer's signature

Date

I confirm that I have received the training detailed above.

Staff signature

Date

Suggested review date

Template F: contacting emergency services

Request an ambulance - dial 999, ask for an ambulance and be ready with the information below.

Speak clearly and slowly and be ready to repeat information if asked.

1. your telephone number
2. your name
3. your location as follows [insert school/setting address]
4. state what the postcode is – please note that postcodes for satellite navigation systems may differ from the postal code
5. provide the exact location of the patient within the school setting
6. provide the name of the child and a brief description of their symptoms
7. inform Ambulance Control of the best entrance to use and state that the crew will be met and taken to the patient
8. put a completed copy of this form by the phone

Template G: model letter inviting parents to contribute to individual healthcare plan development

Dear Parent,

DEVELOPING AN INDIVIDUAL HEALTHCARE PLAN FOR YOUR CHILD

Thank you for informing us of your child's medical condition. I enclose a copy of the school's policy for supporting pupils at school with medical conditions for your information.

A central requirement of the policy is for an individual healthcare plan to be prepared, setting out what support the each pupil needs and how this will be provided. Individual healthcare plans are developed in partnership between the school, parents, pupils, and the relevant healthcare professional who can advise on your child's case. The aim is to ensure that we know how to support your child effectively and to provide clarity about what needs to be done, when and by whom. Although individual healthcare plans are likely to be helpful in the majority of cases, it is possible that not all children will require one. We will need to make judgements about how your child's medical condition impacts on their ability to participate fully in school life, and the level of detail within plans will depend on the complexity of their condition and the degree of support needed.

A meeting to start the process of developing your child's individual health care plan has been scheduled for xx/xx/xx. I hope that this is convenient for you and would be grateful if you could confirm whether you are able to attend. The meeting will involve [the following people]. Please let us know if you would like us to invite another medical practitioner, healthcare professional or specialist and provide any other evidence you would like us to consider at the meeting as soon as possible.

If you are unable to attend, it would be helpful if you could complete the attached individual healthcare plan template and return it, together with any relevant evidence, for consideration at the meeting. I [or another member of staff involved in plan development or pupil support] would be happy for you contact me [them] by email or to speak by phone if this would be helpful.

Yours sincerely